



2041/2 The Esplanade Burleigh Heads QLD

1 1 1

Located directly across from the patrolled Burleigh Beach this spacious apartment offers an expansive undercover wrap around balcony where you can entertain and enjoy Burleigh district views.

This beachfront apartment has all the qualities that one would want with open plan living, a sleek, modern kitchen with stainless steel appliances and a breakfast bar, spacious bedroom and stunning bathroom.

Ambience on Burleigh is an exceptionally well managed, pet-friendly building, with all the features of a five-star premises, including sparkling in ground swimming pool, outdoor spa bath, fully equipped gym, sauna and outdoor BBQ area.

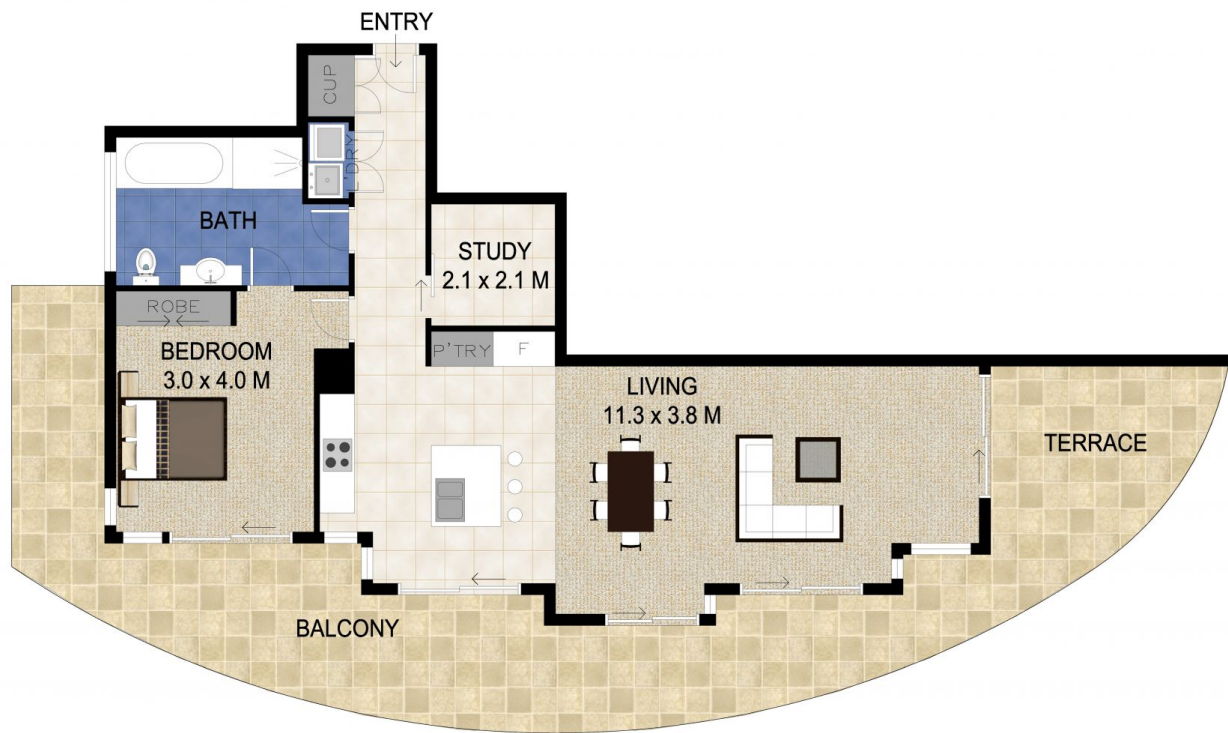
Perfectly positioned in the heart of the sought-after Hub of

Price : \$ 520,000

View : <https://www.laceywest.com.au/sale/qld/gold-coast/burleigh-heads/residential/unit/5936963>



Will West
07 5576 6616



0 1 2 3 4 5

Scale in metres. Indicative only. Dimensions are approximate. All information contained herein is gathered from sources we believe to be reliable. However we cannot guarantee its accuracy and interested persons should rely on their own enquiries.

INTERNAL : 92 SQ.M.
EXTERNAL : 51 SQ.M.



Apt. 2041 'Ambience' 2 The Esplanade, Burleigh Heads



cmmedia