






6/14 Twenty Fifth Avenue Palm Beach QLD

2  2  2 

This two bedroom, two bathroom townhouse is located in a small block of 6 in the sought after North Palm Beach. Strolling distance from the beach and Tallebudgera Creek, cafes and restaurants.

View : <https://www.laceywest.com.au/lease/qld/gold-coast/palm-beach/residential/unit/5937059>

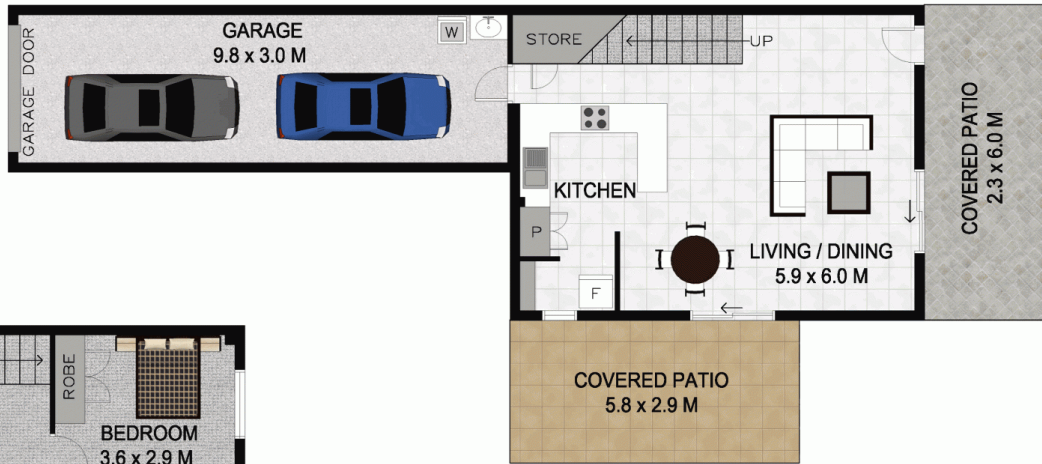
Quality kitchen with stone benches and plenty of storage
Two generous bedrooms, two bathrooms (master with ensuite and walk in robe)
Tandem garage with internal access plus internal laundry
Private courtyard for entertaining or for you to enjoy all year round



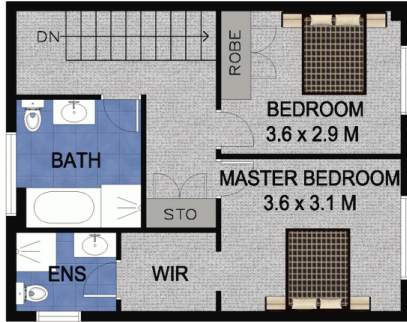
PLEASE REGISTER ONLINE TO INSPECT THIS PROPERTY.

Lacey West Rentals
07 5576 6616

<https://www.laceywest.com.au>



GROUND LEVEL



UPPER LEVEL



Scale in metres. Indicative only. Dimensions are approximate. All information contained herein is gathered from sources we believe to be reliable. However we cannot guarantee its accuracy and interested persons should rely on their own enquiries.

GROUND	:	87 SQ.M.
UPPER	:	52 SQ.M.
PATIO	:	30 SQ.M.

6/14 25th Avenue, Palm Beach

