



### 8/182 The Esplanade Burleigh Heads QLD

1 1 1

Invest or live in this neat and tidy one bedroom apartment on the first floor, located in the popular, tightly held, boutique block of 'Warringa' on the beachfront in Burleigh Heads.

Featuring a north facing open living space function kitchen, comfortable bathroom, internal laundry, separate toilet, large bedroom with plenty of internal cupboards and storage, and a secure covered car park with storage.

With only fourteen apartments in the block and possible future redevelopment potential you will love and be proud of owning this beachfront little beauty with a path directly across the road to the beach.

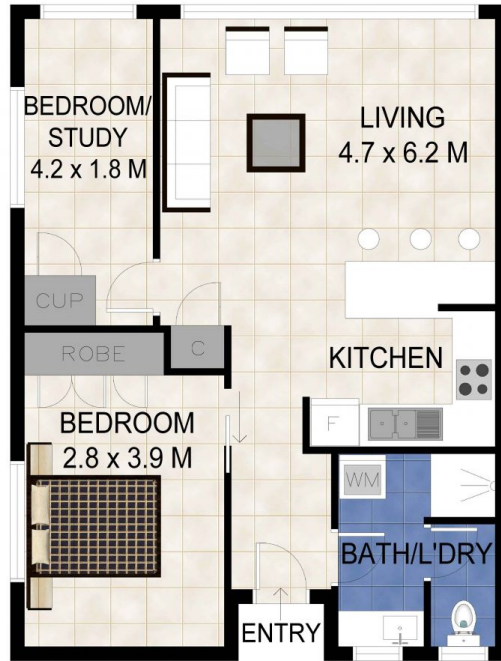
Located in the easiest of positions, with a flat easy stroll to the iconic Burleigh beach and headland, Burleigh Farmers

**Price** : \$ 435,000

**View** : <https://www.laceywest.com.au/sale/qld/gold-coast/burleigh-heads/residential/unit/5937128>



**Will West**  
**07 5576 6616**



Scale in metres. Indicative only. Dimensions are approximate. All information contained herein is gathered from sources we believe to be reliable. However we cannot guarantee its accuracy and interested persons should rely on their own enquiries.

INTERNAL : 63 SQ.M.  
PARKING : 30 SQ.M.



8/182 The Esplanade, Burleigh Heads

