



## 8/24 The Esplanade Burleigh Heads QLD

2  2  1 

Situated in arguably one of the most sought-after beachfront locations in Burleigh Heads, this much-loved generously sized North-facing apartment in the iconic tightly-held building 'Oceania' just moments' walk from all that Burleigh Village has to offer.

This spacious open plan design beachfront apartment presents in original condition and enjoys an abundance of natural light, and fantastic ocean views from the large protected north facing balcony with an outlook to all the happenings on The Esplanade.

This building has a high percentage of owner occupiers and units are tightly held and seldom become available to the market.

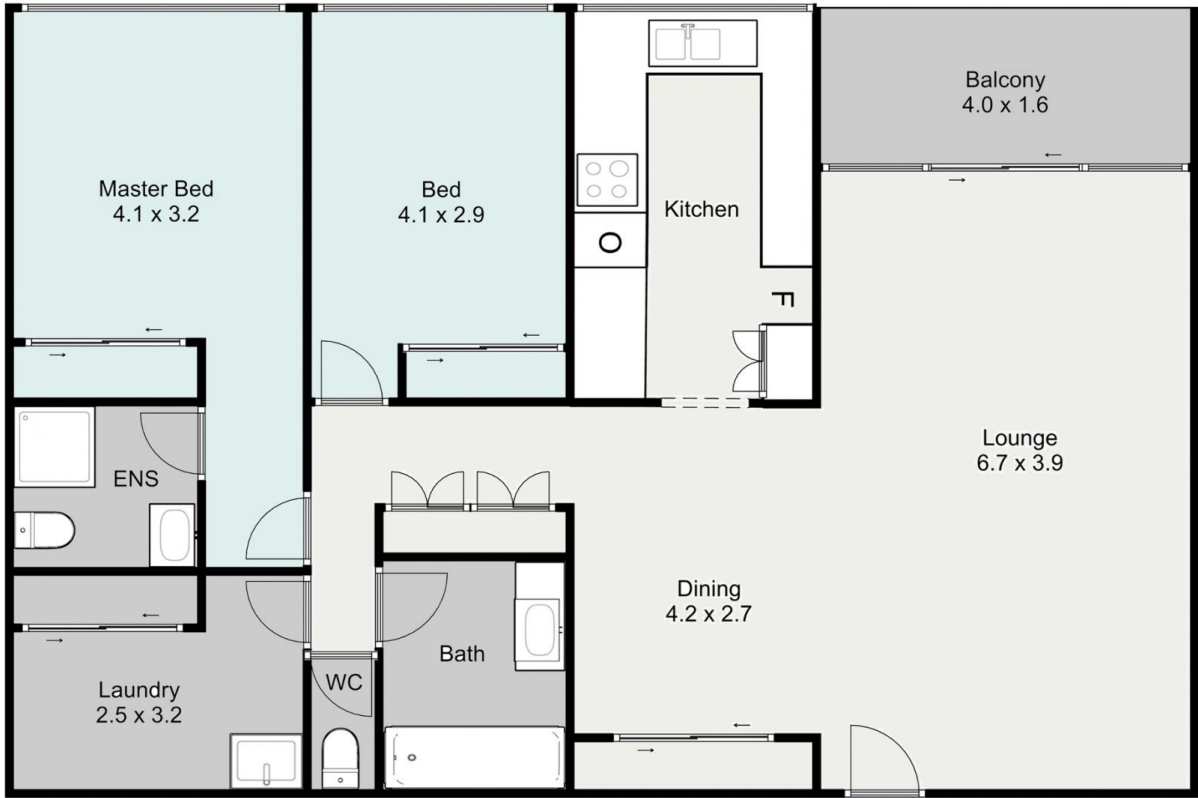
Offered for sale for the very first time in 34 years, this unit

**Price** : \$ 630,000

**View** : <https://www.laceywest.com.au/sale/qld/gold-coast/burleigh-heads/residential/unit/5937201>



**Will West**  
07 5576 6616



8/24 The Esplanade  
Burleigh Heads

Property Features

2 - Bed  
2 - Bath  
1 - Car

Total Floor Area - 118 sqm



Plans shown are for presentation purposes only and are not part of any lease, document or title. They are subject to errors, omissions, inaccuracies and should not be used as a sole and accurate reference. Interested parties should make their own inquiries using independent sources.