

## 25/22 The Esplanade Burleigh Heads QLD

3 2 2

Commanding spectacular ocean views, this North-east facing 9th floor three-bedroom apartment is being offered for auction for the first time in 30 years. Overlooking The Esplanade and beachfront parkland, these amazing views cannot be built out.

**Price** : \$ 1,800,000

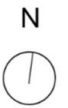
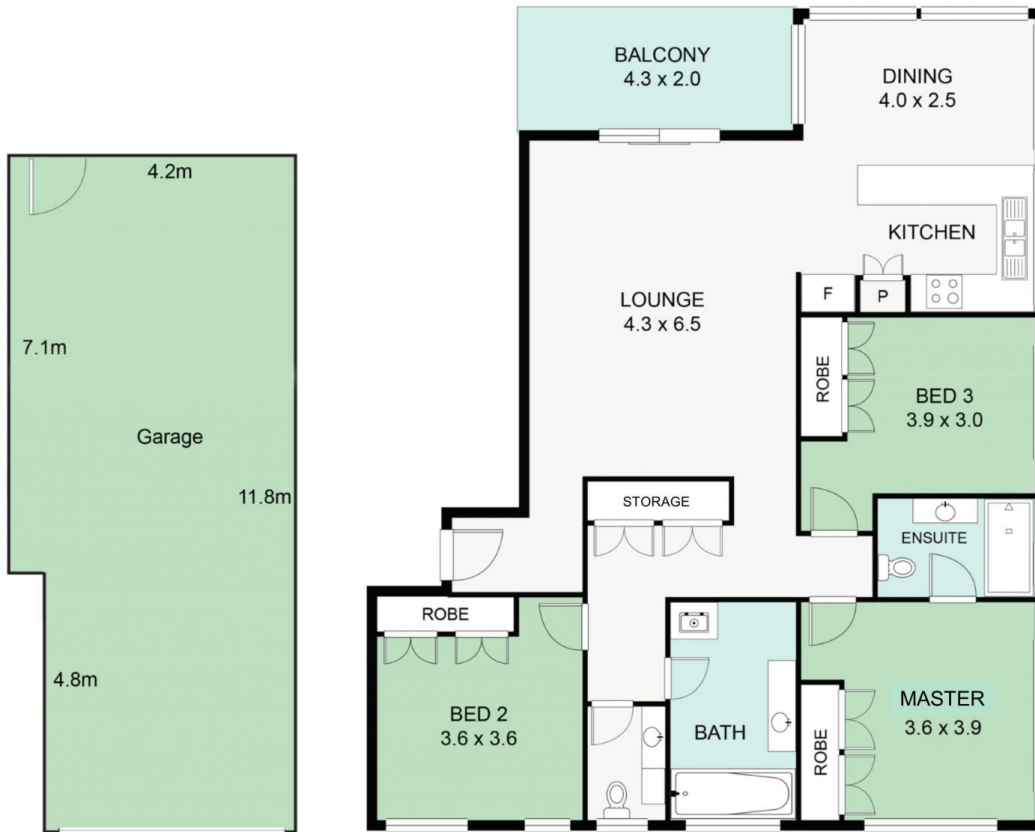
**View** : <https://www.laceywest.com.au/sale/qld/gold-coast/burleigh-heads/residential/unit/6151515>

The "Oceania" complex of 27 tightly held apartments is arguably one of the most sought-after beachfront locations in Burleigh Heads and only moments' walk from all that Burleigh Village has to offer.

This spacious, open plan design beachfront apartment enjoys an abundance of natural light and unparalleled ocean views from every room. The large, protected north facing balcony enjoys summer shade and winter sun while offering an outlook to all the activity on The Esplanade.



**Will West**  
07 5576 6616



25/22 The Esplanade, Burleigh Heads

Internal Area 122m<sup>2</sup> | External 9m<sup>2</sup> | Garage 47m<sup>2</sup>



Bed 3 | Bath 2 | Car 2

**Total floor area 178m<sup>2</sup>**

Plans shown are for presentation purposes only and are not part of any lease, document or title. They are subject to errors, omissions, inaccuracies and should not be used as a sole and accurate reference. Interested parties should make their own inquiries using independent sources.