



15B Diana Avenue Burleigh Heads QLD

3 2 2

This great home is located in one of the most sought-after streets of Burleigh Heads. Leave your car at home and walk to everything Burleigh has to offer - the beach, cafes, restaurants & shops.

Three bedrooms plus separate study
Two bathrooms plus powder room
Single lock up garage plus extra car space inside secure gated entry
Undercover outdoor alfresco dining and courtyard area
Modern light bright kitchen with stone benchtops, and breakfast bar
Air-conditioned open plan living and dining area
Master bedroom with ensuite and walk-in wardrobe and its own balcony
Main bathroom, separate toilet
Internal laundry

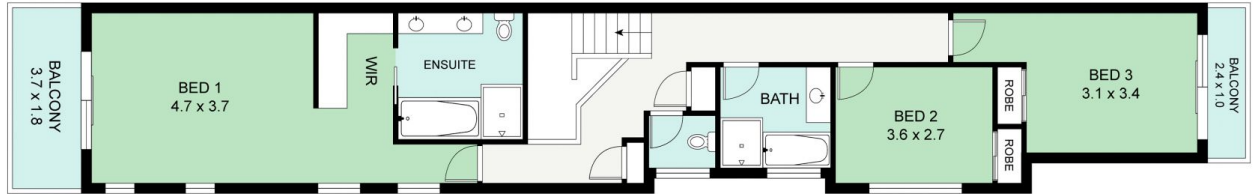
Building Size : 190 sqm
View : <https://www.laceywest.com.au/lease/qld/gold-coast/burleigh-heads/residential/se-mi-detached/6365026>



Lacey West Rentals
07 5576 6616

<https://www.laceywest.com.au>

Lower Level



Upper Level

N



2/15 Diana Avenue, Burleigh Heads
Bed 3 | Bath 2 | Car 1

Internal Area 146.5m² | External 25m² | Garage 18.5m²
Total Floor Area - 190



Plans shown are for presentation purposes only and are not part of any lease, document or title. They are subject to errors, omissions, inaccuracies and should not be used as a sole and accurate reference. Interested parties should make their own inquiries using independent sources.