






6 Elder Entrance Burleigh Heads QLD

4  3  2 

Stunning home on 539sqm in prime location. Architecturally designed with a light-filled and contemporary palette, this stand alone home has been designed with everyday living in mind offering easy-care beach-side living located in a prime central location only moments to James Street and patrolled surf beaches.

Featuring multiple versatile living spaces across two light-filled levels with masses of glass to invite in natural light this home showcases clean lines with beautiful timber floors, spacious and seamless interiors, open-plan living and dining that embody ease and elegance which will no doubt impress even the most fastidious of buyers.

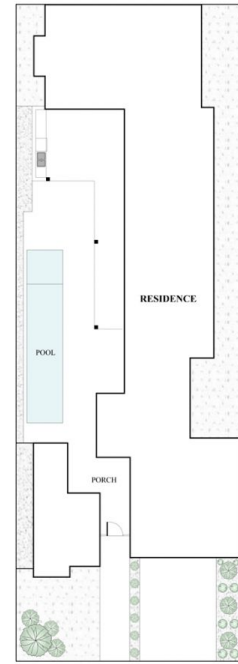
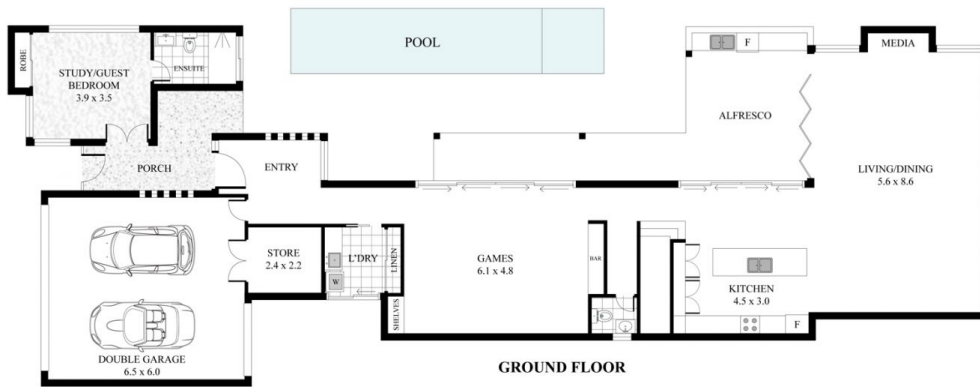
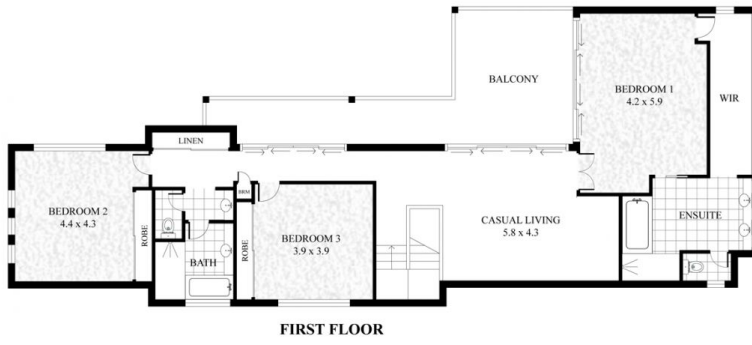
You will enjoy entertaining friends and family from the luxury kitchen featuring stone benchtops and Miele appliances. You will love the private and covered outdoor

Price : \$ 2,200,000

View : <https://www.laceywest.com.au/sale/qld/gold-coast/burleigh-heads/residential/house/6438354>



Will West
07 5576 6616



6 Elder Entrance, Burleigh Heads
 Bed 4 | Bath 4 | Car 2

Internal Area 333m² | External 70m² | Garage 39m²
 Total Floor Area - 442m²



Plans shown are for presentation purposes only and are not part of any lease, document or title. They are subject to errors, omissions, inaccuracies and should not be used as a sole and accurate reference. Interested parties should make their own inquiries using independent sources.