

25/100 The Esplanade Burleigh Heads QLD

2 2 2

Be amazed as you walk through this light bright fully renovated North facing apartment with the open plan living and dining area opening onto the balcony looking out to absolutely gorgeous views of the glistening Pacific Ocean and bright white sands of Burleigh Heads.

Situated in a well-maintained building with mainly owner occupiers, this top floor unit is located in 'Ambassador' capturing gorgeous North facing beach front views that play host to an incredible lifestyle opportunity with world famous Burleigh Beach and James street.

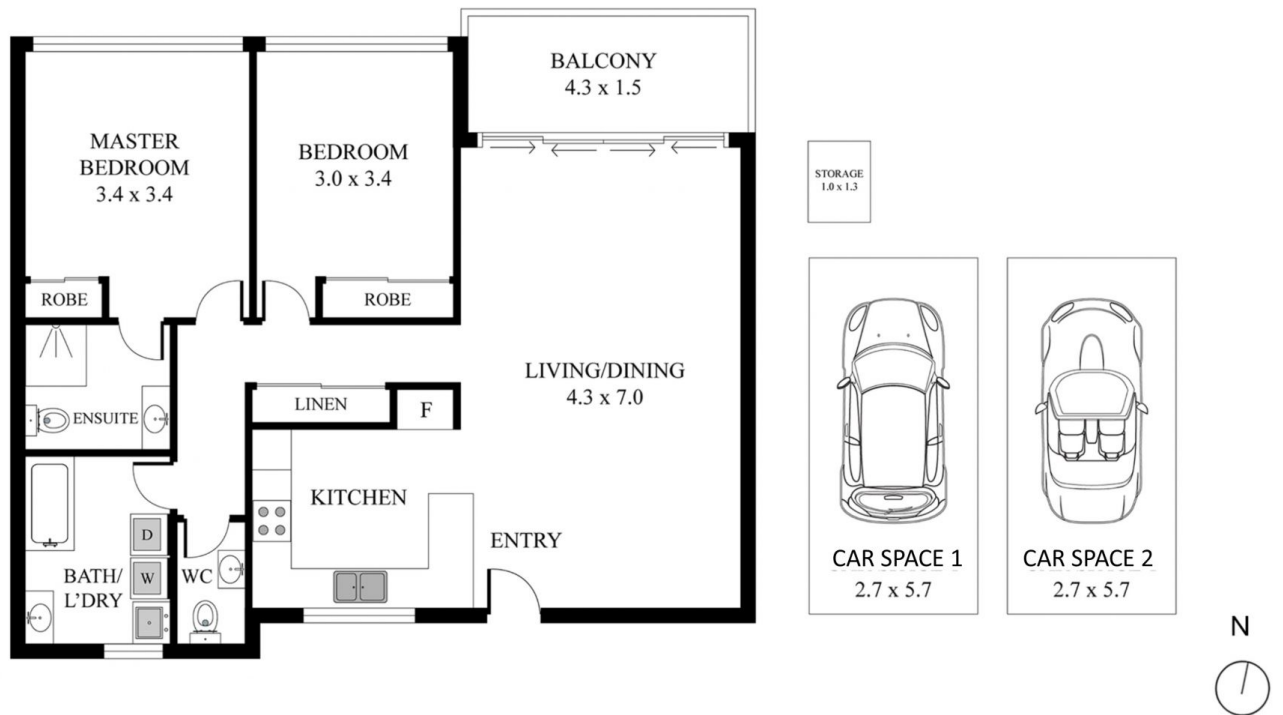
This spacious beachfront apartment enjoys an abundance of natural light, you will enjoy cooking in the gourmet kitchen featuring Miele appliances, stone bench tops with waterfall edge, and soft-close cupboard and drawers. There are two spacious bedrooms with ocean views and

Price : \$ 1,150,000

View : <https://www.laceywest.com.au/sale/qld/gold-coast/burleigh-heads/residential/unit/6445567>



Will West
07 5576 6616



25/100 The Esplanade, Bureleigh Heads
Bed 2 | Bath 2 | Car 2

Internal Area 87m² | External 8m² | Carspace 30m² | Storage 1.3m²
Total Floor Area - 126.3m²



Plans shown are for presentation purposes only and are not part of any lease, document or title. They are subject to errors, omissions, inaccuracies and should not be used as a sole and accurate reference. Interested parties should make their own inquiries using independent sources.