



## 2/43 Murlong Crescent Palm Beach QLD

4 2 2

Absolute Estuary frontage duplex located in a highly sought-after location, where properties are very tightly held over many years, on million-dollar row Murlong Crescent.

Boasting unspoilt Estuary views across a wide expanse of pristine, crystal clear blue water to Fleays Fauna Reserve this fully renovated duplex home enjoys an abundance of natural light and features a seamless transition from the fully tiled open plan living to the alfresco area with Bali hut by way of bifold doors opening to frame the stunning views, and your own private sandy beach where you can enjoy fishing, swimming, boating, water-skiing from your own back yard.

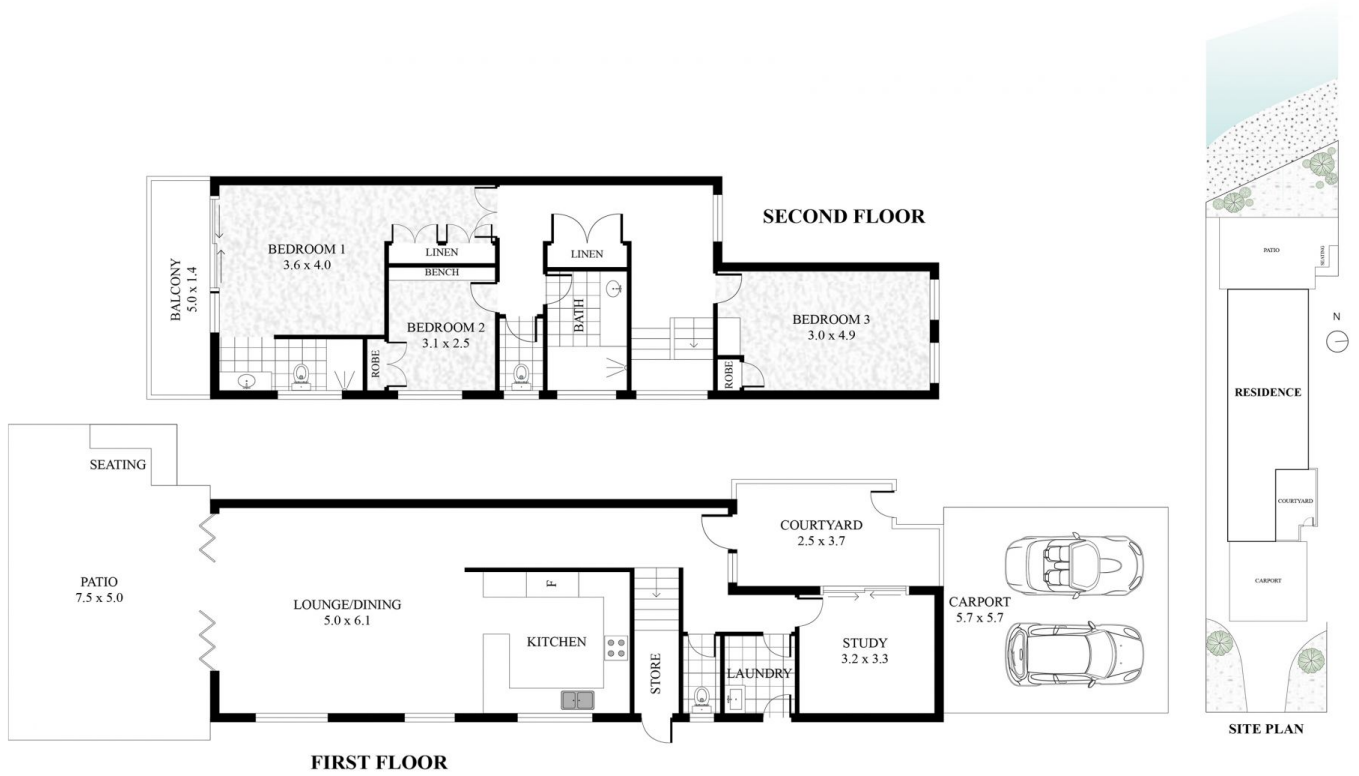
Enjoy entertaining and cooking in the light bright gourmet kitchen with plenty bench and cupboard space and breakfast bar featuring stone bench tops with waterfall

**Price** : \$ 2,100,000

**View** : <https://www.laceywest.com.au/sale/qld/gold-coast/palm-beach/residential/semi-detached/6458654>



**Will West**  
07 5576 6616



2/43 Murlong Crescent, Palm Beach  
Bed 4 | Bath 2

Internal Area 152m<sup>2</sup> | External 85m<sup>2</sup> | Shed 33m<sup>2</sup>

Total Floor Area - 270m<sup>2</sup>



Plans shown are for presentation purposes only and are not part of any lease, document or title. They are subject to errors, omissions, inaccuracies and should not be used as a sole and accurate reference. Interested parties should make their own inquiries using independent sources.