



85 Hill Avenue Burleigh Heads QLD

3 3 2

Set in an exclusive position on Burleigh hill, this elevated home is full of character and is surrounded by impeccable lush stunning greenery, within a peaceful setting and enjoys magnificent elevated skyline views of the city and hinterland, all within walking distance to the beach!

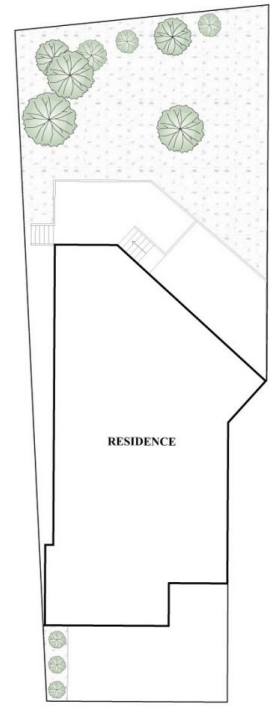
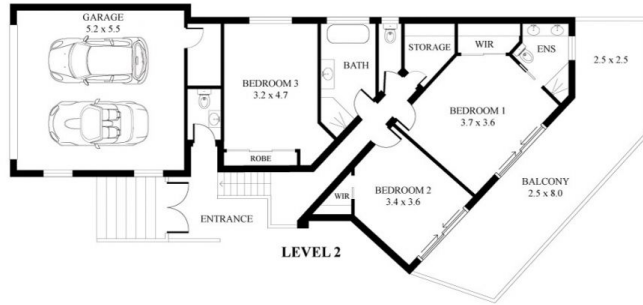
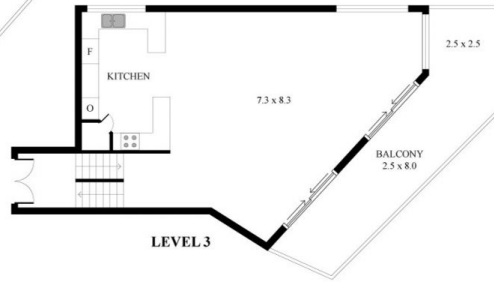
This substantial three level home features a very generous open plan living and dining area with stunning timber floors through to the kitchen, with wide breakfast bar & plenty of storage and wooden bench top space, featuring gas cook stove top and stainless-steel appliances.

Step outside to the spacious undercover wrap around balcony through the sliding wooden framed glass doors to capture the glorious sunsets while enjoying Burleigh's National Park and wildlife. With gorgeous views of the National Park this versatile home offers a beautiful outdoor

Price : \$ 1,310,000
Land Size : 416 sqm
View : <https://www.laceywest.com.au/sale/qld/gold-coast/burleigh-heads/residential/semi-detached/6548992>



Will West
07 5576 6616



SITE PLAN

85 Hill Avenue, Burleigh Heads

Bed 3 | Bath 3 | Car 2

Internal Area - 247m² | External - 90m² | Garage - 29m²

Total Floor Area - 366m²



Plans shown are for presentation purposes only and are not part of any lease, document or title. they are subject to errors, omissions, inaccuracies and should not be used as a sole and accurate reference. Interested parties should make their own inquiries using independent sources.