






### 3/72 The Esplanade Burleigh Heads QLD

2  2  1 

This stunning two-bedroom apartment located in the beautifully maintained building 'Boardwalk' (only completed June 2018) is set directly across from the pristine coastline of Burleigh Heads.

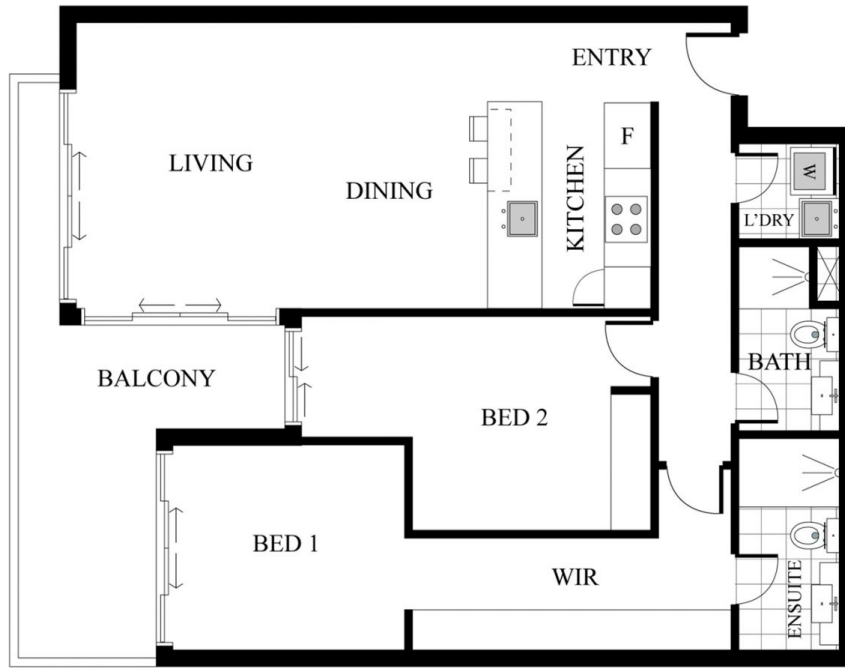
Situated on the 2nd floor with a South east aspect this spacious well presented open plan beachfront apartment offers tree filtered sea views across the pool area from the undercover balcony framed by floor to ceiling glass sliding doors, it is the perfect place to sit back and enjoy the view while breathing in the fresh coastal air.

The galley style kitchen exudes luxury with stainless steel European appliances, stone bench tops and breakfast bar which flows effortlessly on to the open plan living and dining room that is complimented with soft carpet and air conditioning.

**Building Size** : 114 sqm  
**View** : <https://www.laceywest.com.au/sale/qld/gold-coast/burleigh-heads/residential/unit/6591745>



**Will West**  
07 5576 6616



3/72 The Esplanade, Burleigh Heads  
 Bed 2 | Bath 2 | Car 1

Internal Area 94m<sup>2</sup> | External 21m<sup>2</sup>  
 Total Floor Area - 114m<sup>2</sup>



Plans shown are for presentation purposes only and are not part of any legal document or title. They are subject to errors, omissions, inaccuracies and should not be used as a sole and accurate reference. Interested parties should make their own inquiries using independent sources.