

8 Bullimah Avenue Burleigh Heads QLD

2 1 1

Presenting an outstanding opportunity this home is sitting on gold, ideally positioned in Koala Park Estate at the foothill of Burleigh Heads National Park, and just a 50-metre walk to the beautiful Tallebudgera Creek and moments to all of Burleigh Heads main amenities and attractions.

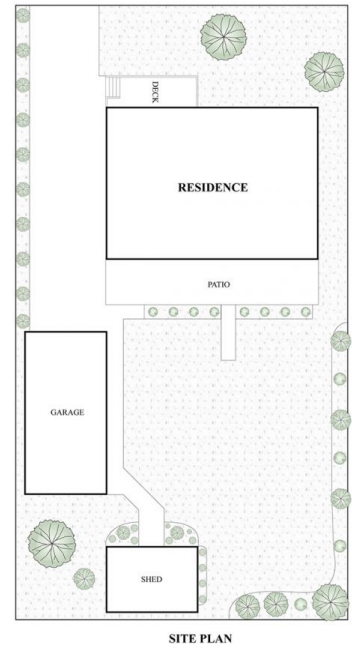
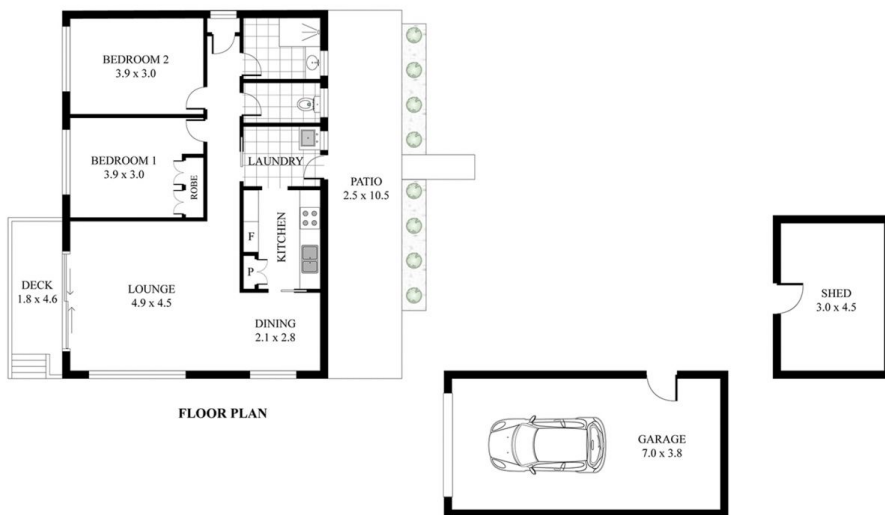
It is no secret that Koala Park Estate is a property hotspot, nestled next to Burleigh Heads National Park and Tallebudgera Creek, this location really gives you the feeling of being away from it all but is convenient to everything you want.

This pocket is a hotspot for developers and investors with multiple developments currently under construction. Featuring multiple investment and development opportunities this site consists of a fantastic medium

Price : \$ 2,370,000
Land Size : 549 sqm
View : <https://www.laceywest.com.au/sale/qld/gold-coast/burleigh-heads/residential/house/6606298>



Will West
 07 5576 6616



8 Bullimah Avenue, Burleigh Heads

Internal 78m² | External 34m² | Garage 26m² | Shed 13.5m² | Total Area 151.5m²

2 Bed 1 Bath 1 Car



Plans shown are for presentation purposes only and are not part of any legal document or title. They are subject to errors, omissions, inaccuracies and should not be used as a sole and accurate reference. Interested parties should make their own inquiries using independent sources.