



2/164 The Esplanade Burleigh Heads QLD

2 2 2

Mahana is one of Burleigh Heads' most iconic and tightly held buildings and is perfectly positioned on a large 1011M2 corner block. Boasting only 12 apartments in the building with 1 apartment per floor, where the lift takes you straight to your front door. Situated directly opposite beautiful Burleigh beach, Mahana has been a Burleigh landmark since its inception!

Situated on the second floor this stunning, fully renovated apartment affords amazing wide ocean views and the ability to step through the back door straight into the shower after a beach swim.

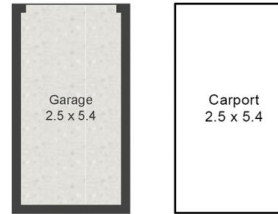
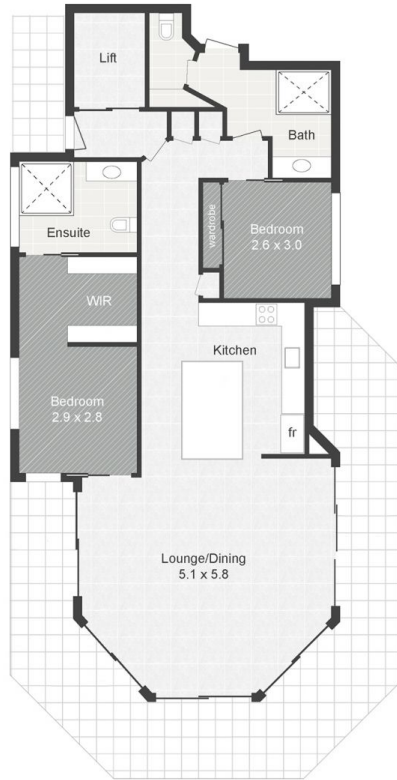
The apartment features two bedrooms, master with ensuite and walk-through robe, 2nd bedroom with ceiling fan and built-in. For the entertainer there is a gourmet kitchen with SMEG appliances including pyrolytic oven and induction

Price : \$ 1,640,000

View : <https://www.laceywest.com.au/sale/qld/gold-coast/burleigh-heads/residential/unit/7059543>



Will West
07 5576 6616



WILL WEST
0404 227 952

2/164 The Esplanade
BURLEIGH HEADS

- 2 Bed
- 2 Bath
- 2 Car

Internal 94m2
External 31m2
Garage 14m2
Carport 14m2
Total Area 153m2

Plans shown are for presentation purposes only and are not part of any legal document or title. They are subject to errors, omissions, inaccuracies and should not be used as a sole and accurate reference. Interested parties should make their own inquiries using independent sources.