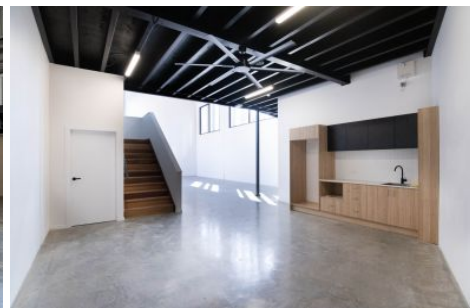




LACEY WEST



### 8/1 Hornet Place Burleigh Heads QLD

2 🚗

Boutique development, located within a stones throw of Reedy Creek Road, the M1 & Burleigh Beach and surrounded by strong local businesses.

- Providing a generous total area of 190m<sup>2</sup>
- Ground floor area of 137m<sup>2</sup>
- Mezzanine office area of 53m<sup>2</sup>
- Sealed floors to the warehouse area
- Immaculate kitchen including built in fridge cavity & tiled splash back
- Large fully tiled bathroom including walk in shower
- Open plan mezzanine with split system air conditioning, timber look vinyl flooring and natural light with leafy green outlook

**Type** : Industrial  
**Price** : \$3800 per month + GST + outgoings  
**Building Size** : 190 sqm  
**View** : <https://www.laceywest.com.au/8688024>



**James Borbidge**  
07 5576 6616



**Josh Cruden**  
07 5576 6616

[For full version visit the website](https://www.laceywest.com.au)

<https://www.laceywest.com.au>

5 Park Ave Burleigh Heads QLD 4220  
07 5576 6616 [reception@laceywest.com.au](mailto:reception@laceywest.com.au)