



LACEY WEST



1602/6 Second Avenue Burleigh Heads QLD

2 2 1

Apartment 1602 in one of Burleigh's latest boutique developments 'Grace by Mosaic' presents a near new two-bedroom residence that perfectly blends contemporary elegance with relaxed coastal charm.

Located on the top floor, this beautifully appointed apartment offers ocean views panning through to the vast hinterland, all from the comfort of your north facing entertainer's balcony.

Step inside and experience a thoughtfully curated interior and exterior living where luxury meets functionality. Engineered timber flooring flows seamlessly through open-plan living spaces which offer a tranquil retreat, a

Type : Unit

Price : Offers over \$1,700,000

View : <https://www.laceywest.com.au/8689125>



Will West
07 5576 6616

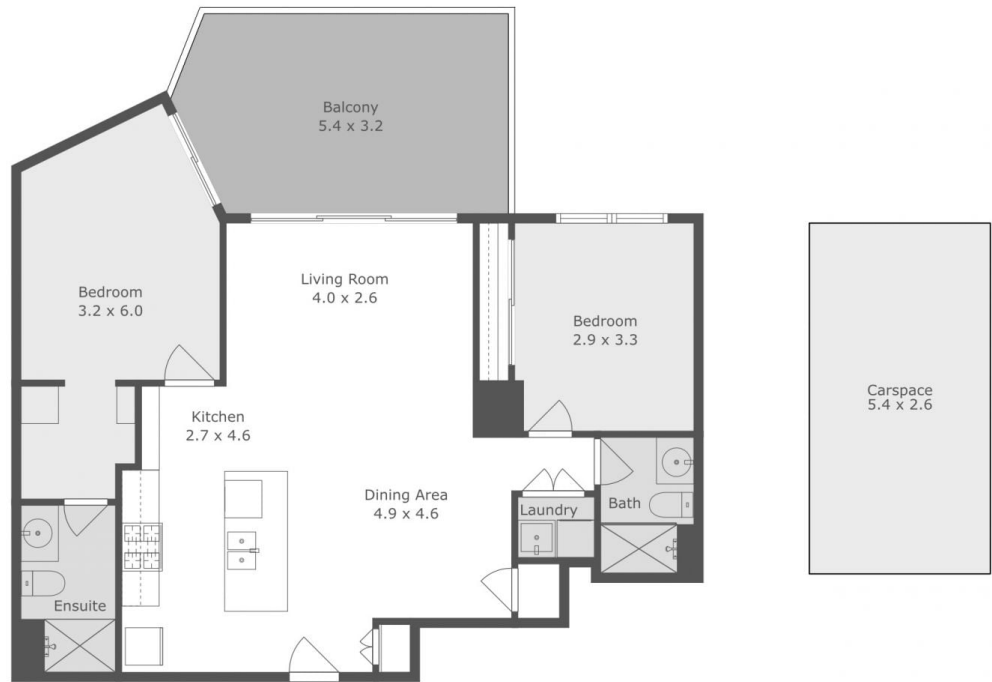


Tiffany Richmond
07 5576 6616

[For full version visit the website](https://www.laceywest.com.au)



LACEY WEST
WILL WEST 0404 227 952



1602/6 Second Ave, Burleigh Heads



INTERNAL AREA: 84M² | EXTERNAL AREA: 16M² | CARSPACE: 14M² | TOTAL AREA: 112M²

Plans shown are for presentation purposes only and are not part of any legal document or title. They are subject to errors, omissions, inaccuracies and should not be used as a sole and accurate reference. Interested parties should make their own inquiries using independent sources.