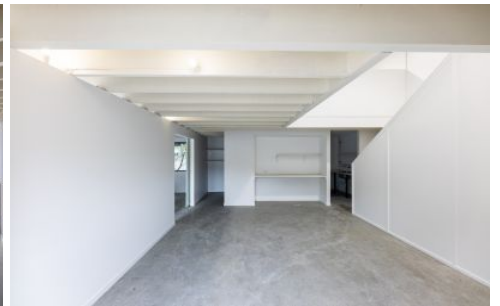
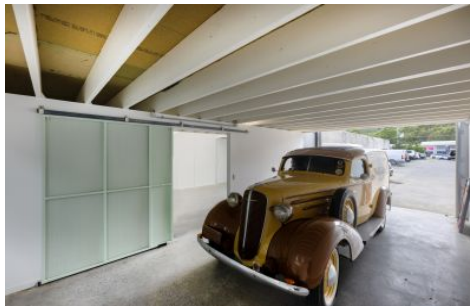
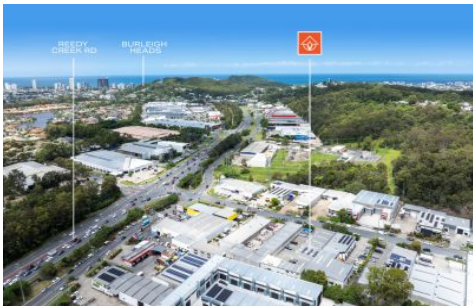




LACEY WEST



### 10/7 Ramly Drive Burleigh Heads QLD

Located within the Burleigh Heads industrial precinct, this property presents an excellent entry-level opportunity for a small business.

- 76m2 ground floor approved area + approx. 70m2 mezzanine storage
- Well-presented ground floor with office space above
- Two (2) allocated on-site car parks
- Bathroom and kitchenette amenities
- Large Airconditioning system to first level mezzanine
- Abundant natural light via multiple windows
- Roller door access plus professional glazed entry
- Direct Access at end of driveway
- Rarely seen properties in this price range in Burleigh

**Type** : Industrial  
**Price** : \$629,000 + GST  
**Building Size** : 146 sqm  
**View** : <https://www.laceywest.com.au/8692942>



**James Borbidge**  
07 5576 6616



**Josh Cruden**  
07 5576 6616

[For full version visit the website](https://www.laceywest.com.au)

<https://www.laceywest.com.au>

5 Park Ave Burleigh Heads QLD 4220  
07 5576 6616 [reception@laceywest.com.au](mailto:reception@laceywest.com.au)